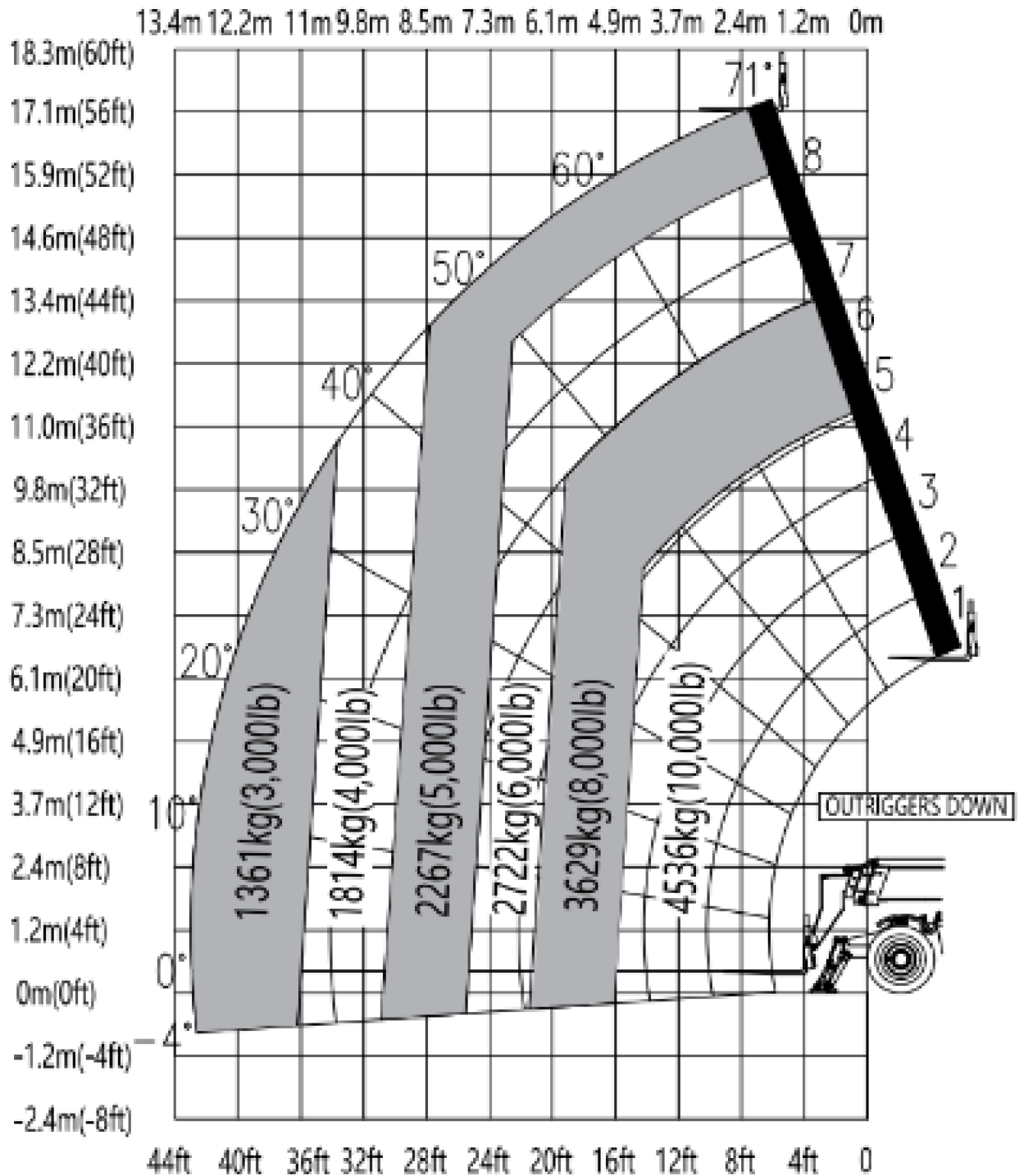
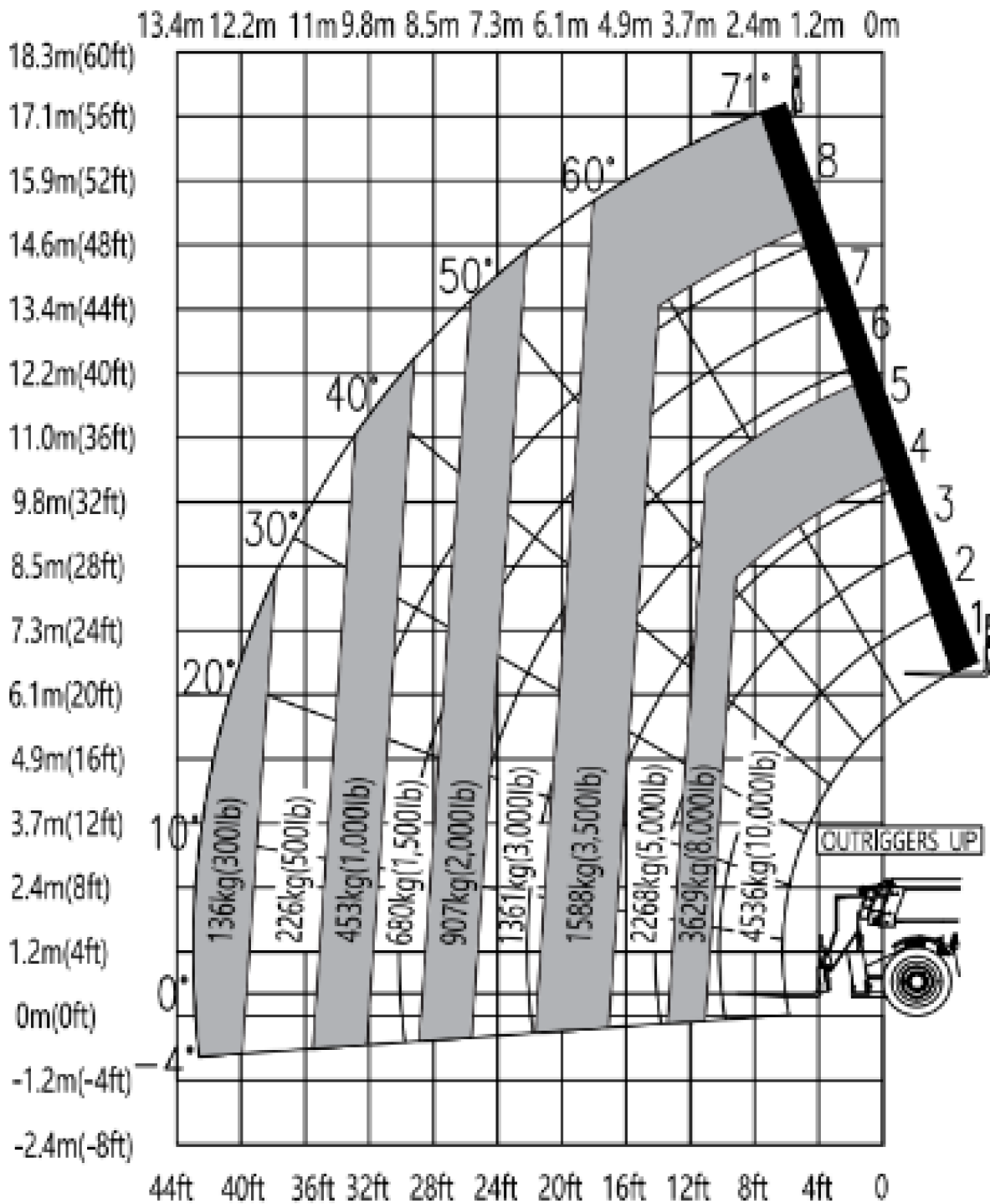


SANY STH1056 - Telehandler - Specs



SANY STH1056 - Telehandler - Specs



SANY STH1056 - Telehandler - Specs

Dimensions

Maximum Lift Height	17.13 m	56' 2"
Maximum Forward Reach	13.08 m	42' 11"
Height, Stowed	2.55 m	8' 4"
Length, Stowed (without Forks)	6.28 m	20' 7"
Width	2.56 m	8' 5"
Wheelbase	3.49 m	11' 5"
Ground Clearance (Center)	0.46 m	1' 6"
Ground Clearance (Axle)	0.45 m	1' 6"
Weight	15,100 kg	33,290 lb

Performance

Maximum Lift Capacity	4 536 kg	10,000 lb
Lift Capacity at Maximum Height	2 267 kg	5,000 lb
Lift Capacity at Maximum Reach	1 361 kg	3,000 lb
Boom (Raise/Lower)	11 sec	14 sec
Boom (Extend/Retract)	15 sec	16 sec
Frame Leveling	+/- 10 degrees	
Maximum Drive Speed	32 kph	20 mph
Outside Turning Radius (4WS)	4.30 m	14' 1"
Auxiliary Hydraulic Flow	63 L/min	17 gpm
Auxiliary Hydraulic Pressure	17 MPa	2,466 psi
Standard Tire Size	400/75-28	

Capacities

Power	97 kW	130 hp
Torque	488 Nm	360 lbf
Electrical System	24 volt	
Hydraulic Tank Capacity	124 L	33 gal
Hydraulic System Capacity (with Tank)	159 L	42 gal
Fuel Tank Capacity	135 L	36 gal

Components

Engine	Cummins QSF3.8	
Transmission	Dana VDT12000	
Axles F/R	Dana 212	Dana 223
Hydraulic Pump	Kawasaki Load Sense Piston Pump	
Hydraulic Manifold	Parker	